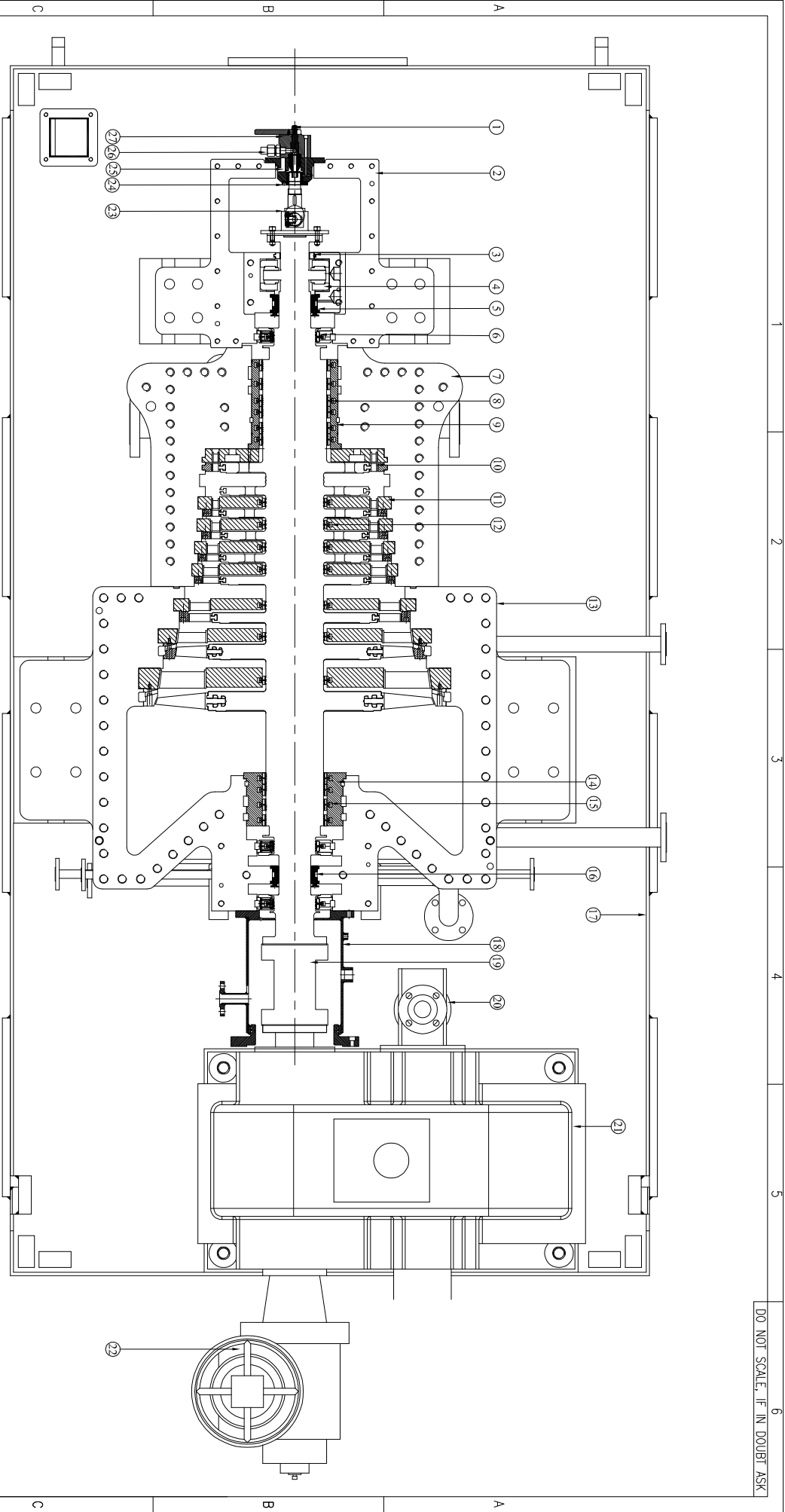


LIST OF ILLUSTRATIONS, & CATALOGUES

Description	Illustration No./ Catalogues
General Arrangement of TG Set	01
Turbine Sectional Arrangement	02
Dump Valve Assembly	03
Manual Trip Assembly	04
Over Speed Trip Assembly	05
Journal & Thrust Bearing Assembly	06
Oil Cooler	07
Oil Filter	08
Clearances	09
Lifting Arrangement	10
	Main Stop Valve & Control Valve (Butterfly Valve)



DESCRIPTION			
ITEM NO	COMPONENT NAME	9	19
1	MANUAL TRIP VALVE	10	20
2	STEAM END PEDESTAL	11	21
3	ROTOR SHAFT OIL SEAL BEARING	12	22
4	THRUST BEARING ASSEMBLY	13	23
5	ROTOR TWO LUBE BEARING	14	24
6	OIL SEAL PACKING	15	25
7	STEAM END CASING	16	26
8	H.P. SIDE LABY PACKING MAIN	17	27
		18	

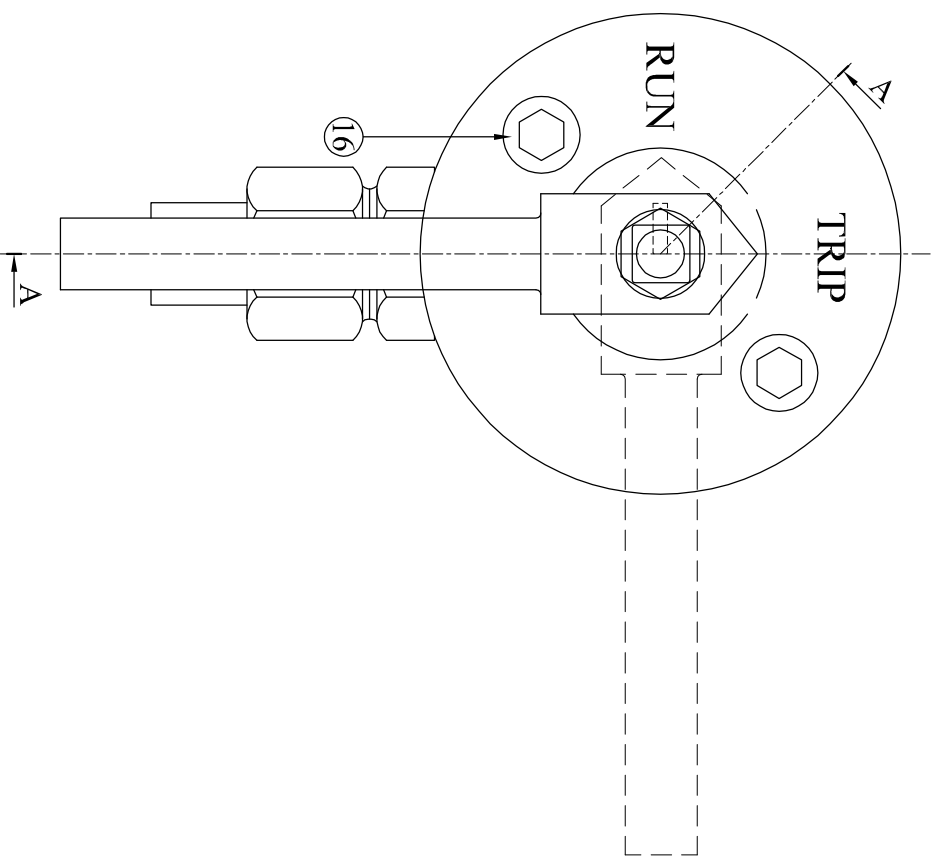
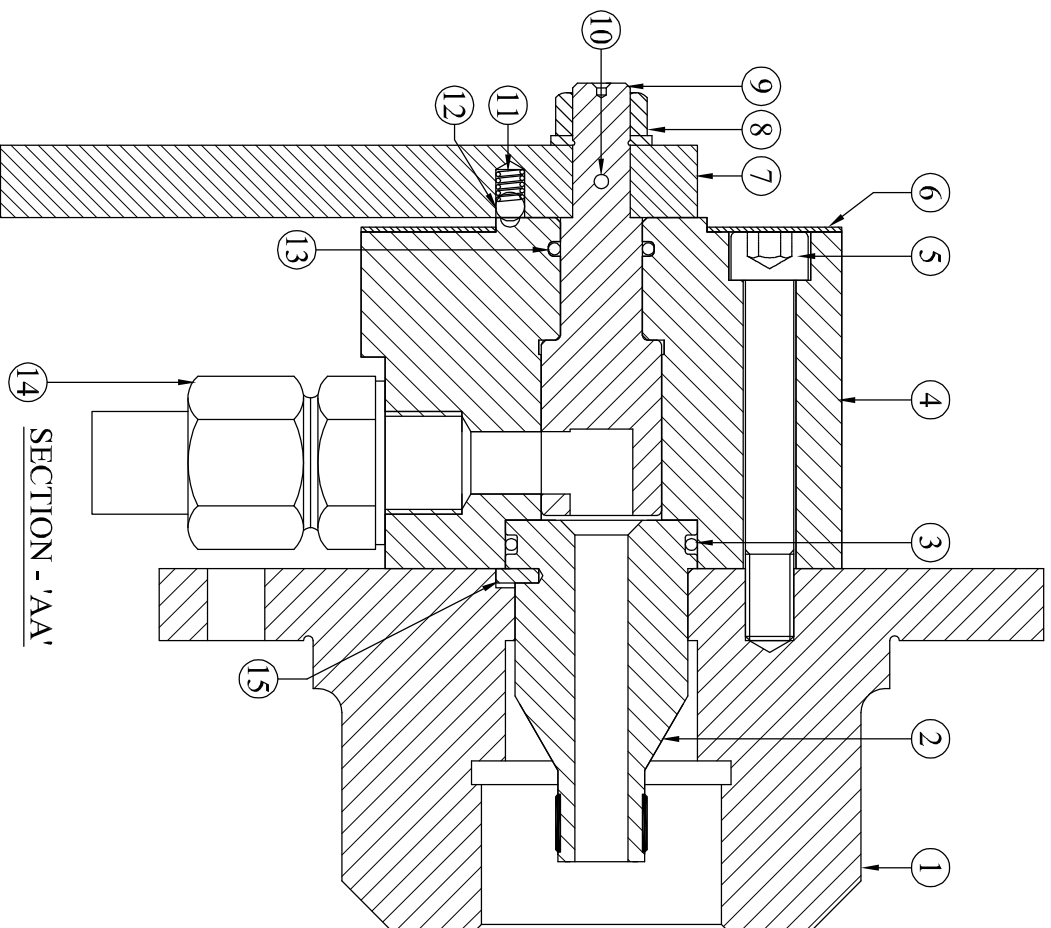
TITLE:

TURBINE SECTIONAL
ARRANGEMENT

ILLUSTRATION NUMBER-02

DRG. NO.
PT-AS-6625

Max/Watt™



SL.No.	DESCRIPTION	QTY
1	STEAM END PEDESTAL COVER	1 No.
2	OIL FEED CONNECTION	1 No.
3	'O' RING	1 No.
4	MANUAL TRIP BODY	1 No.
5	M10 ALLEN SCREW	2 Nos.
6	NAME PLATE	1 No.
7	MANUAL TRIP HANDLE	1 No.
8	M12 NUT	1 No.

PLAN VIEW	
TITLE: MANUAL TRIP ASSEMBLY	ILLUSTRATION NUMBER-04
MaxWatt™	DRG. NO. PT-AS-4422

DO NOT SCALE IF IN DOUBT ASK

DESCRIPTION

COMPONENT NO	COMPONENT NAME	QTY
1	OVER SPEED TRIP SPRING	1No.
2	OVER SPEED TRIP VALVE	1No.
3	OVER SPEED TRIP CAP	1No.
4	PIN (Ø3 x 9.5mm LENGTH)	2Nos.
5	OVER SPEED TRIP SHAFT	1No.

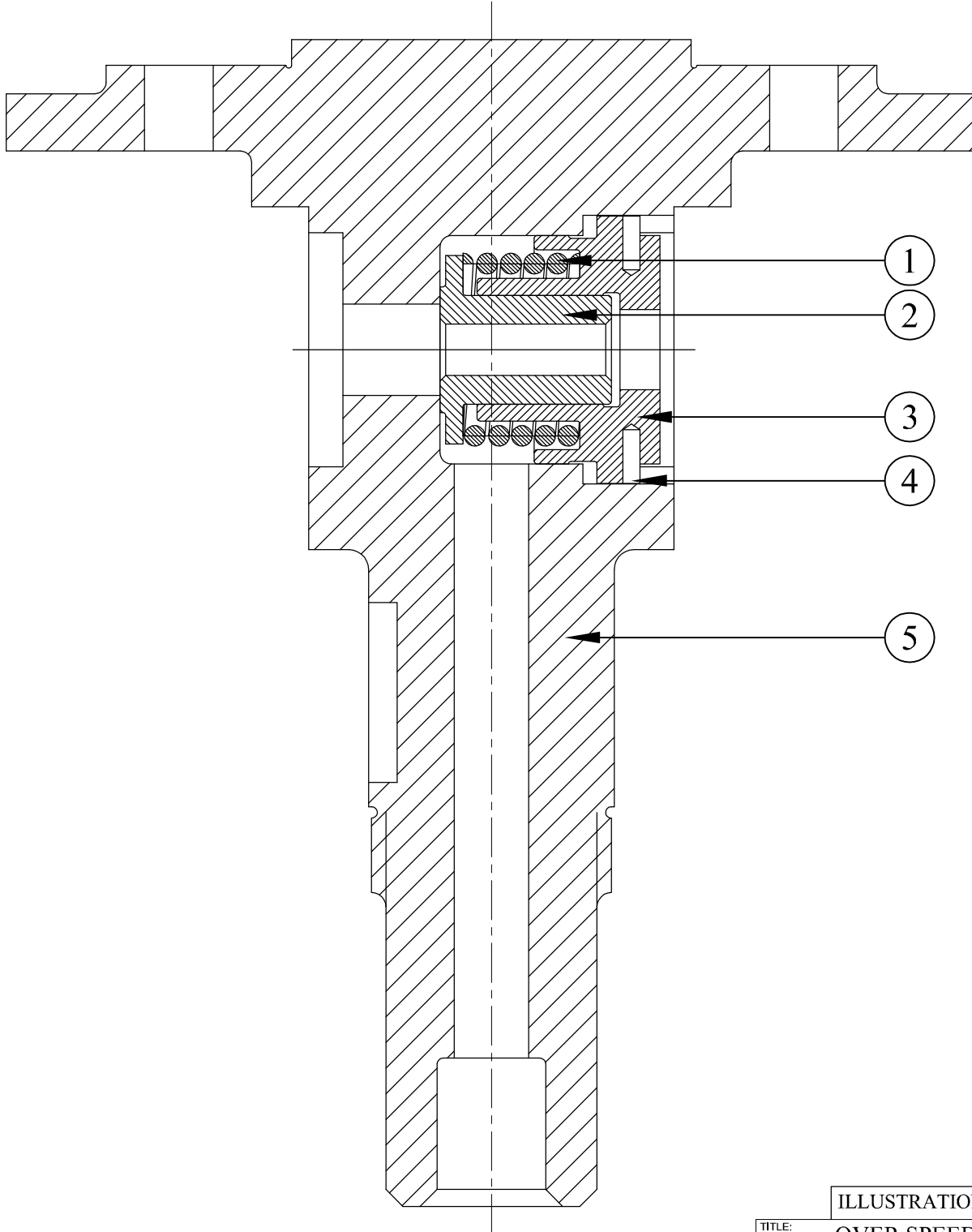


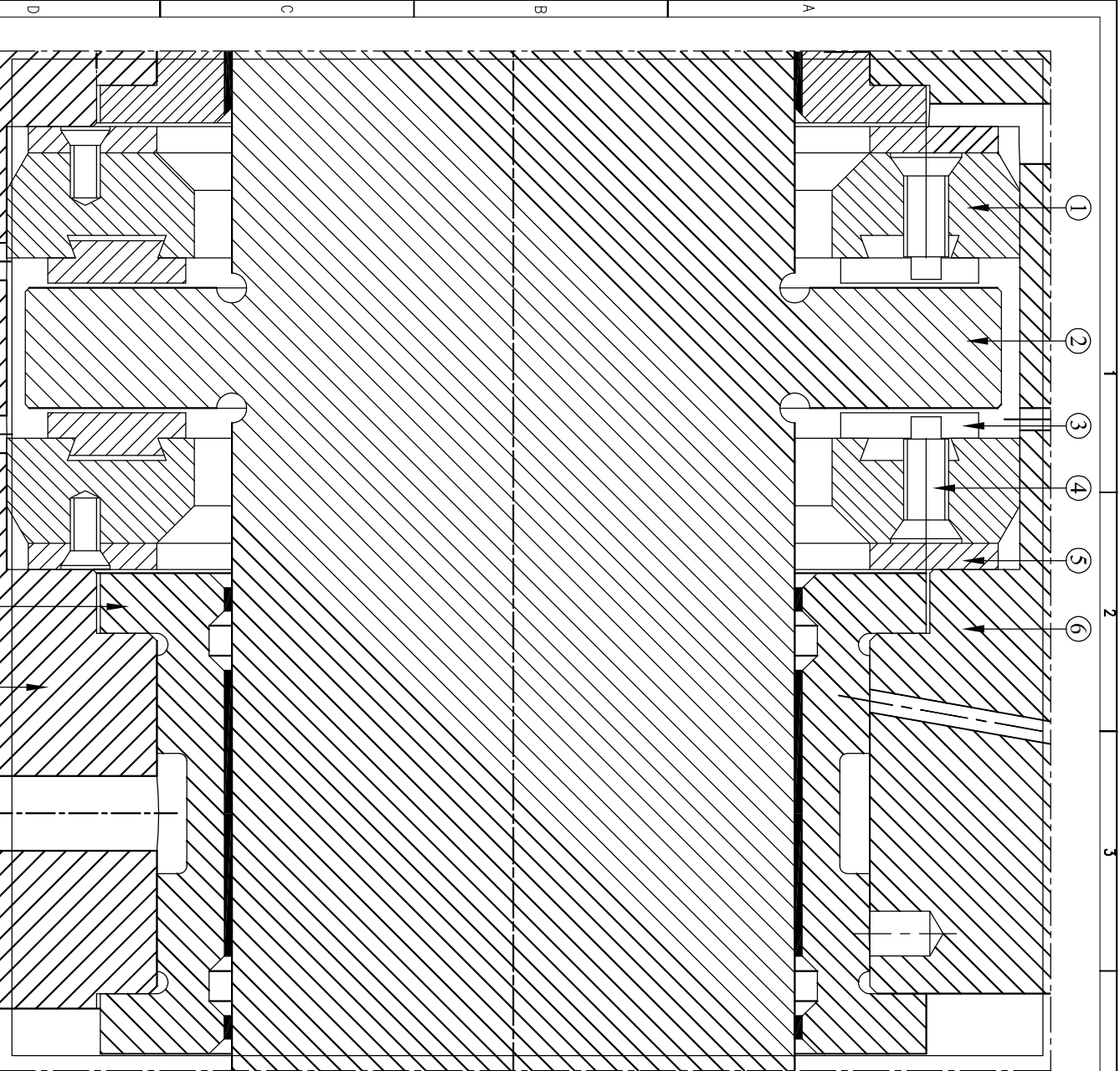
ILLUSTRATION NUMBER-05

TITLE:

OVER SPEED TRIP
SHAFT ASSEMBLY

Max/Watt™

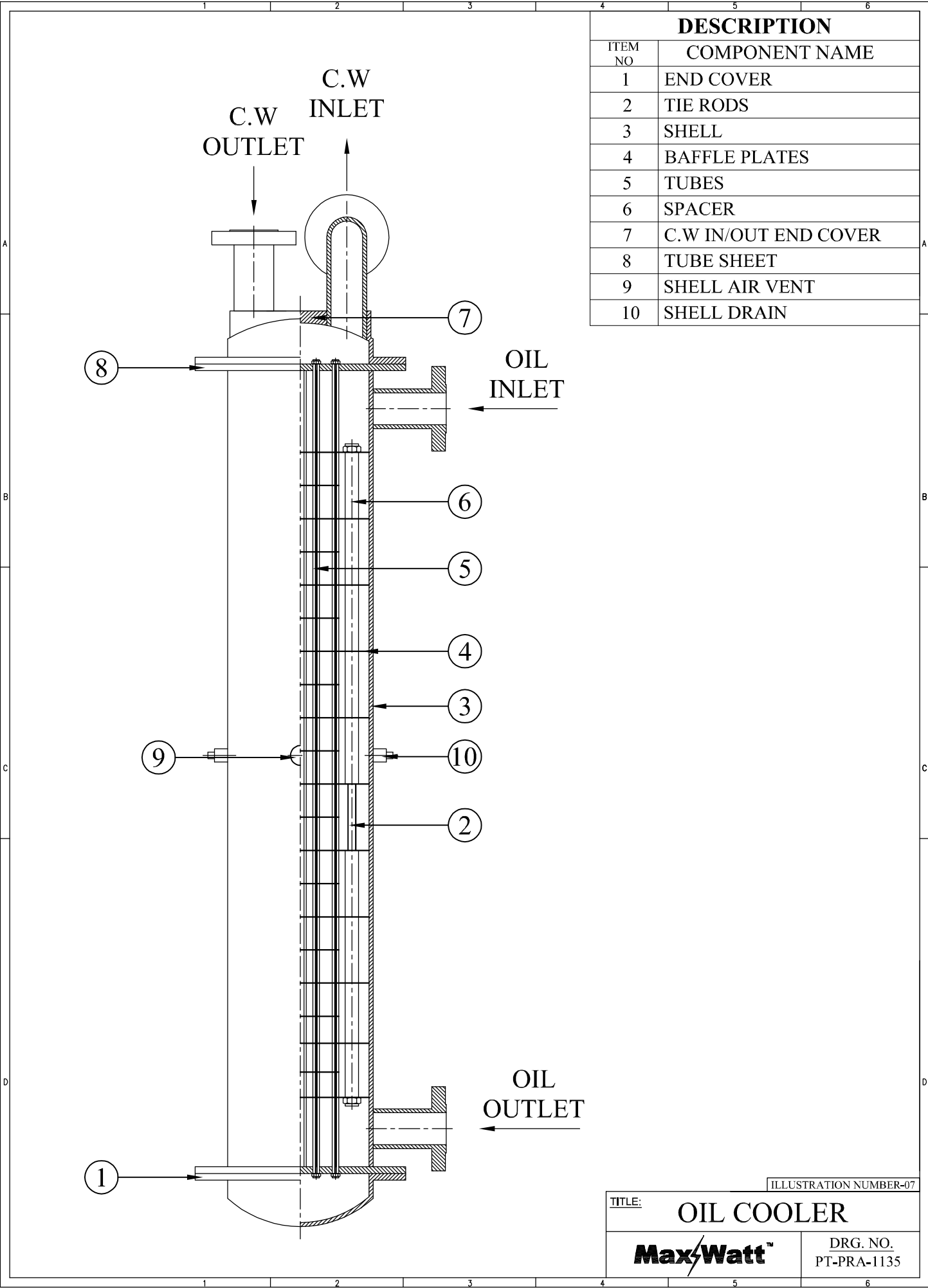
DRG. NO.
PT-AS-3500



DESCRIPTION	
ITEM NO.	COMPONENT NAME
1	THRUST PAD HOLDER
2	ROTOR SHAFT
3	THRUST PAD
4	RETAINING PIN
5	THRUST PAD HOLDER LINER
6	BEARING CAP
7	ROTOR TWO LOBE BEARING
8	STEAM END PEDESTAL

ILLUSTRATION NUMBER - 06

TITLE: JOURNAL & THRUST BEARING ASSEMBLY



DESCRIPTION	
ITEM NO	COMPONENT NAME
1	END COVER
2	TIE RODS
3	SHELL
4	BAFFLE PLATES
5	TUBES
6	SPACER
7	C.W IN/OUT END COVER
8	TUBE SHEET
9	SHELL AIR VENT
10	SHELL DRAIN

ILLUSTRATION NUMBER-07

TITLE: OIL COOLER

MaxWatt™

DRG. NO.
PT-PRA-1135

DESCRIPTION	
ITEM NO	COMPONENT NAME
1	METAL SCREEN
2	FILTER BODY
3	MICROFELT CARTRIDGE
4	LOCKING NUT
5	COVER PLATE
6	OIL SEAL

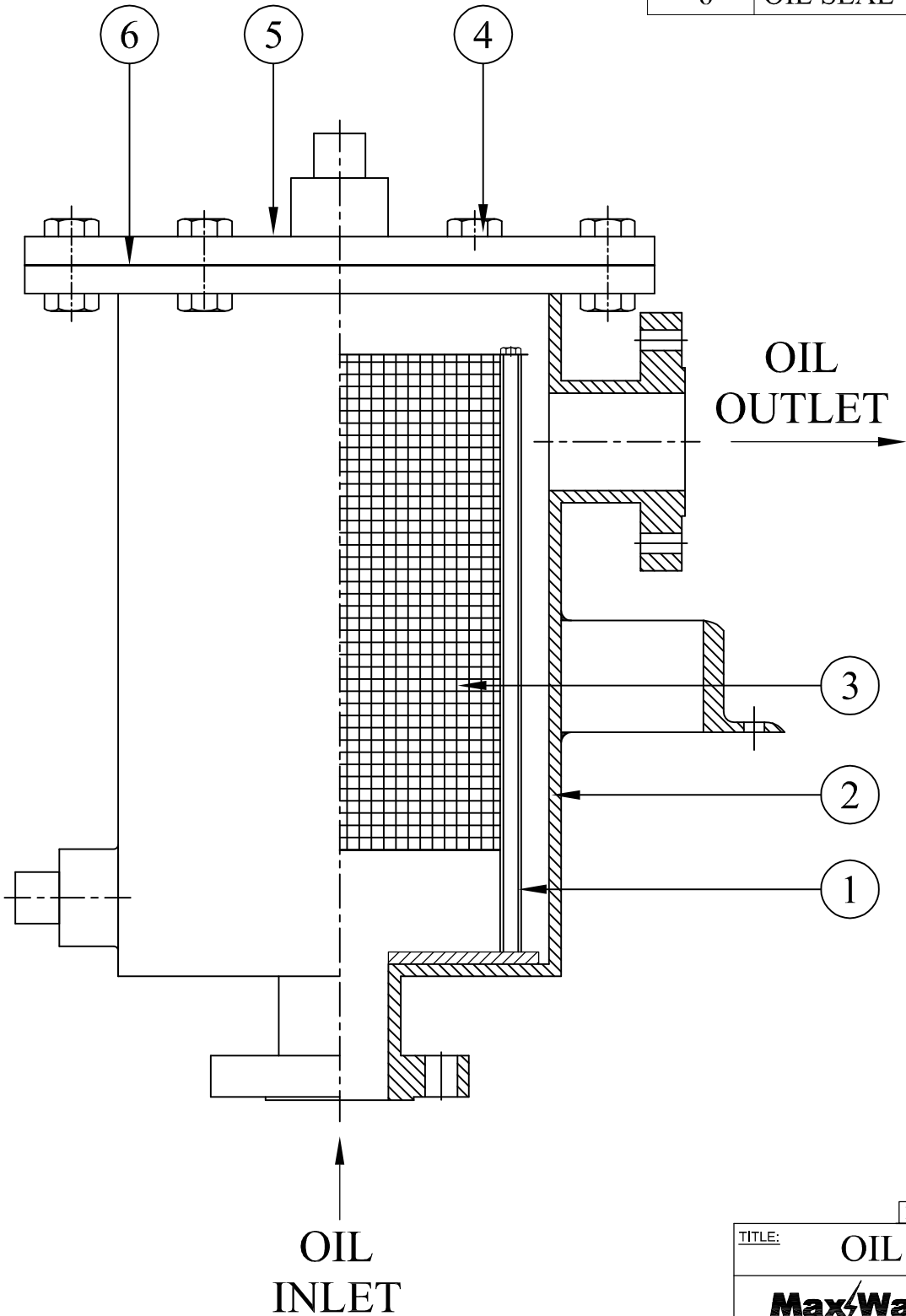
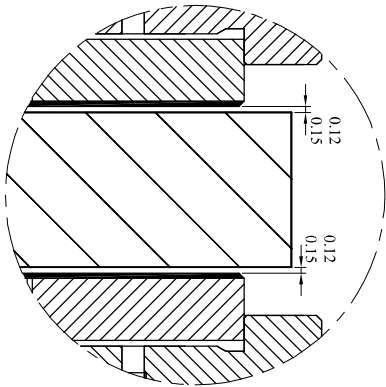
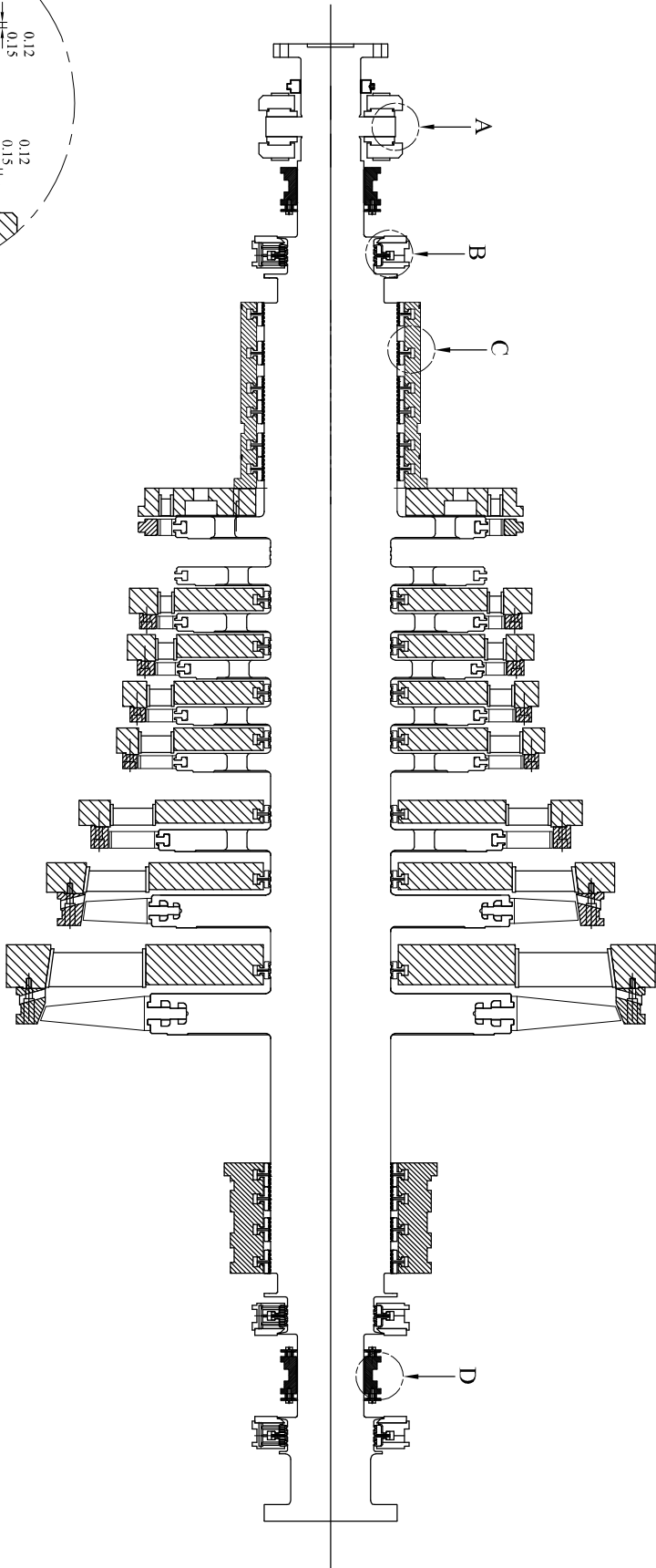
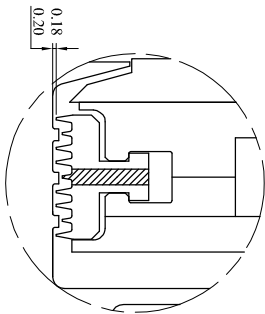


ILLUSTRATION NUMBER-08

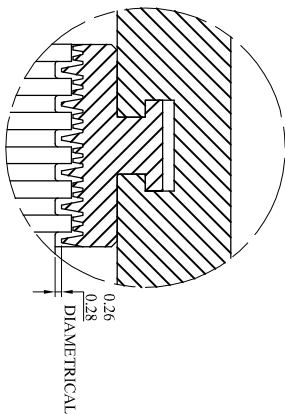
TITLE: OIL FILTER	
Max/Watt™	DRG. NO. PT-PRA-1134



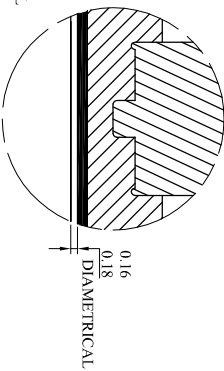
DETAIL OF 'A'
THRUST BEARING
CLEARANCE



DETAIL OF 'B'
OIL BAFLE CLEARANCE



DETAIL OF 'C'
LABY CLEARANCE



DETAIL OF 'D'
JOURNAL BEARING
CLEARANCE

TITLE:

CLEARANCE

ILLUSTRATION NUMBER-09

Max/Watt™

MAXWATT TURBINES PRIVATE LIMITED

DRG. NO.

PT-AS-6626

DESCRIPTION	
ITEM NO	COMPONENT NAME
1	MANUAL TRIP ASSEMBLY
2	SHAFT END BEARING
3	STEAM END PEDESTAL TOP
4	STEAM CHEST ASSEMBLY
5	STEAM & EXHAUST CASING TOP HALF
6	ROTOR ASSEMBLY
7	HIGH SPEED COUPLING
8	MAIN OIL PUMP
9	GEAR BOX TOP COVER
10	GEAR WHEEL & GEAR SHAFT
11	PINION SHAFT

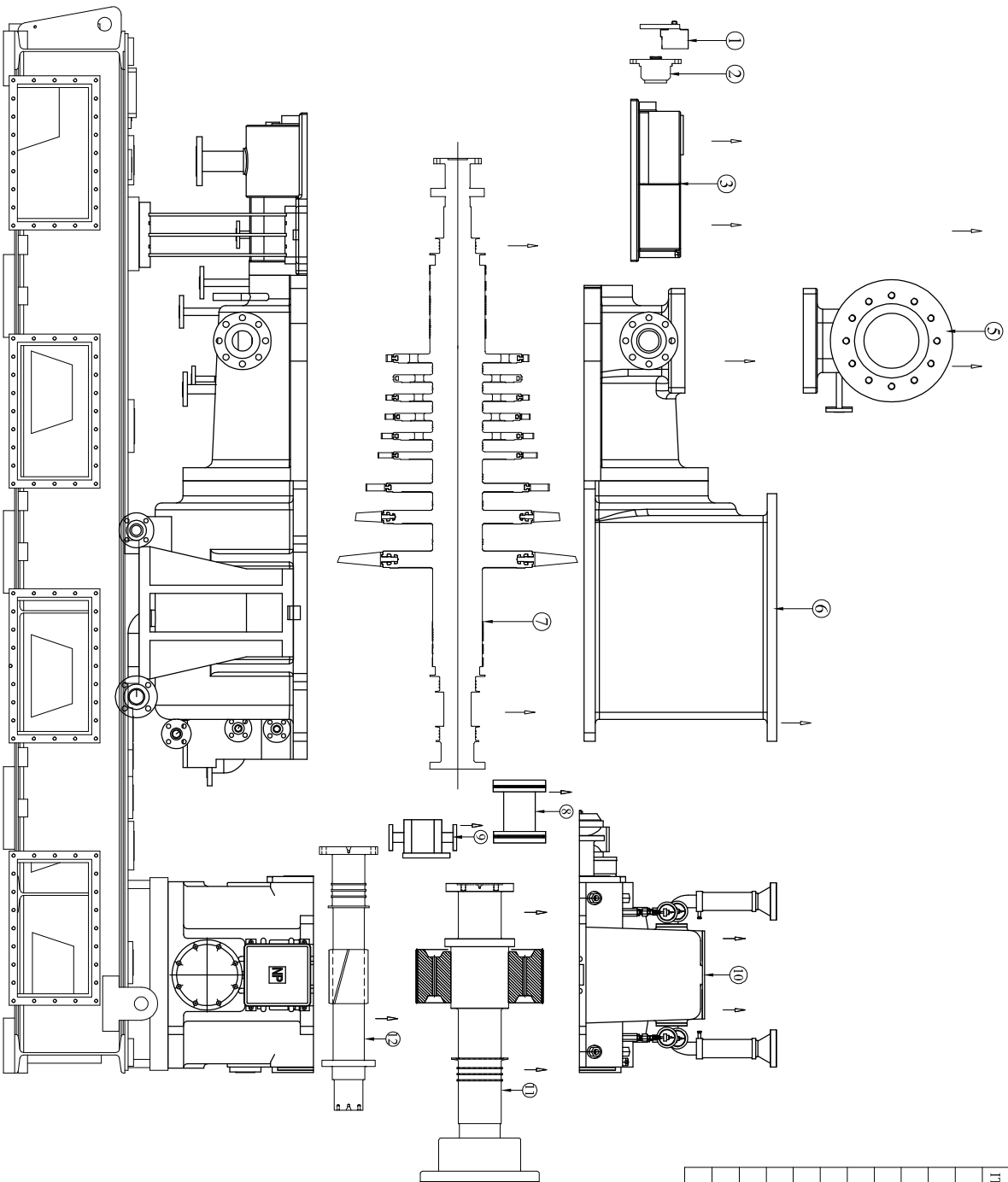


ILLUSTRATION NUMBER-10

TITLE: LIFTING ARRANGEMENT

Max/Watt™

DRG. No.
PT-AS-6627